

8 TROUBLE SHOOTING

1. No water coming out of the tap with red light flashing:

- a Check water filter/ diaphragm using steps in **section 7** maintenance
- b Check the aerator for blockages
- c Make sure the unit is not in security mode
- d If flashing continues then check the batteries if using battery operated version

2. No water from tap and no red light flashing:

- a Check the connections between the tap and mains/ batteries. Ensure that they are completely dry and then re-attach if it is safe to do so
- b If connected to the mains check to see if the mains fuse has been tripped
- c Check to see if the sensor may be picking up reflections from the wash basin or any other object and eliminate cause of reflection
- d Check the water supply pressure, it must be between 0.5 - 8 bar. If higher a pressure reducing valve is required (not supplied)

3. Water does not stop coming out of tap:

- a Check all connections between the solenoid and the tap
- b If not fully connected push connectors all the way together.


If the unit fails to operate correctly after completing trouble shooting please contact support on 0121 530 7000 or alternatively please return the unit and all packaging to your retailer.


FOLD


Dudley Electrofit⁺


Avanti Tap Installation Instructions




 0121 530 7000

 0121 557 5345

 sales@thomasdudley.co.uk

 www.dudleybathroomproducts.co.uk

 Thomas Dudley Ltd, P.O.Box 28, Birmingham New Road, Dudley, West Midlands, DY1 4SN

© 2016 Thomas Dudley Ltd

R326860 12217 Iss D

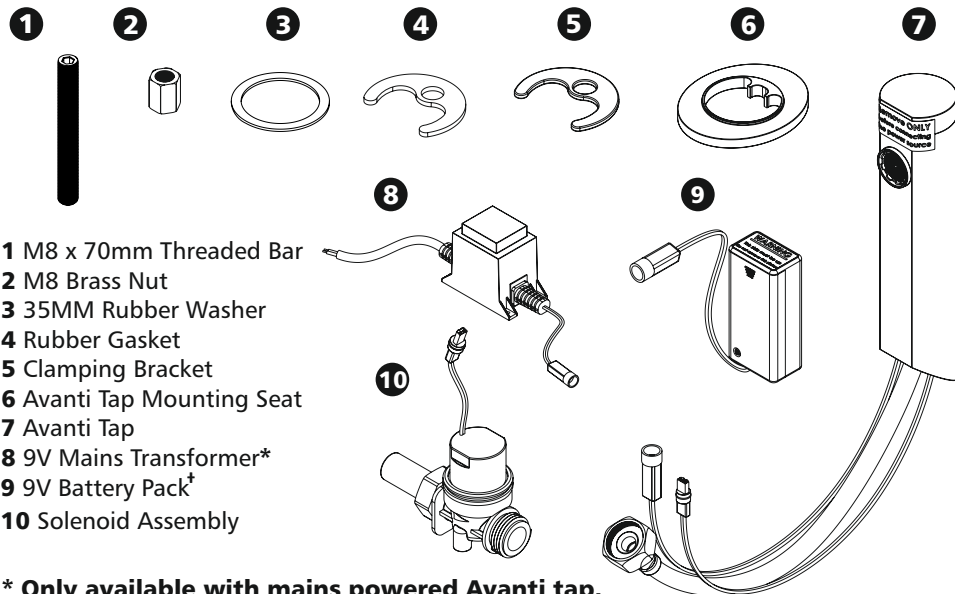
FOLD



Dudley
Water saving solutions

1 PACK CONTENTS

IMPORTANT: Check contents, make sure all the parts are accounted for before discarding any packaging material. If any parts are missing, do not attempt to install your Avanti tap until you obtain the missing parts.



- 1 M8 x 70mm Threaded Bar
- 2 M8 Brass Nut
- 3 35MM Rubber Washer
- 4 Rubber Gasket
- 5 Clamping Bracket
- 6 Avanti Tap Mounting Seat
- 7 Avanti Tap
- 8 9V Mains Transformer*
- 9 9V Battery Pack†
- 10 Solenoid Assembly

* Only available with mains powered Avanti tap.

† Only available with battery powered Avanti tap.

2 INSTALLATION REQUIREMENTS

IMPORTANT: Installation of the transformer must be done and checked by a qualified electrician. During installation do not expose the electronics to fluids, dust, dirt or damp.

1 DO NOT Install the sensor facing a mirror or any other electronic system operated by an infra-red sensor.

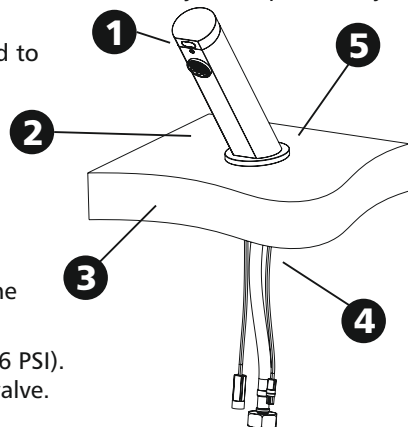
2 To prevent reflection problems, it is recommended to keep a minimum distance of 300mm between the sensor and any other objects.

3 The work top can be up to 40mm thick.

4 Leave sufficient space for all the components under the work top, such as the solenoid, mains transformer or battery pack.

5 A minimum distance of 10mm is required from the back of the wall to the tap mounting seat.

6 Recommended water pressure 0.5 - 8.0 bar (7-116 PSI). For higher water pressure use a pressure reducing valve. Maximum water pressure 70°C



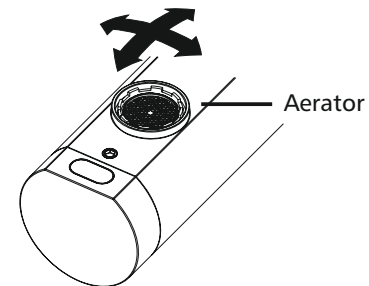
7 MAINTENANCE

IMPORTANT: If you notice a decrease in water flow it may be because the water filter and the diaphragm in the solenoid are blocked. Follow instructions to clean.

Adjusting the aerator

The Avanti tap includes an adjustable aerator that allows adjustment of the water direction on site to prevent water splashing.

To change the angle of the water stream, simply move the tilting plate on the aerator by pressing it smoothly.



Cleaning the water filter

The water filter is required to prevent foreign particles from entering the tap.

1 Shut off the isolation valve (see step 1 of installation guide)

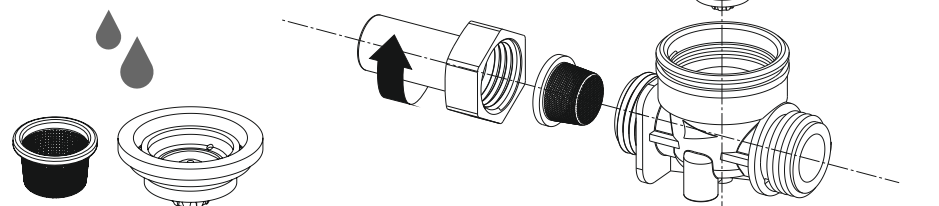
2 Disconnect the solenoid assembly from the pipework

3 Remove 15mm adaptor (if used) then take out filter

4 Wash the filter with water

5 Reassemble all the parts and restore water supply

6 Check to see there are no leaks and flow is back to normal



Cleaning the Diaphragm

Occasionally the diaphragm may get blocked by debris and scale. To clean follow steps **1 & 2** above then proceed below.

3 Unscrew the solenoid top

4 Wash the diaphragm, plunger, spring and surrounding area in clean water

5 Reassemble all the parts taking care to insert the spring vertically and restore the water supply.

FOLD

FOLD

5 OPERATION Continued

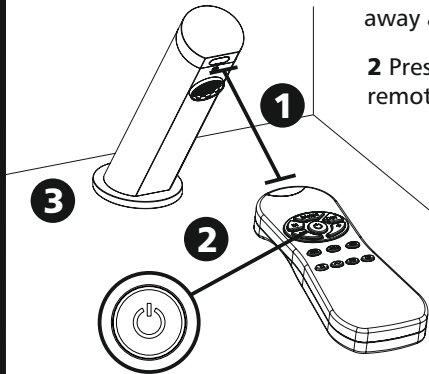
Cleaning the Avanti Tap

1 Hold the remote in front of the sensor about **15-20 cm** away as show below.

2 Press the temporary off button (shown below) on the remote to disable the Avanti tap for 1 minute.

3 Proceed to clean around the tap area and press the temporary off button once again to activate the Avanti tap dispenser.

Important: DO NOT use steel wool or cleaning agents containing alcohol, acid, abrasives, etc as this will cause damage to the surface. Use only soap and water then wipe dry with a clean cloth or towel.



Temporary off button

6 REMOTE CONTROL (Optional, does not come with Avanti tap)

IMPORTANT: For detailed instructions on the remote control please refer to remote control instructions. Please note the remote may vary from images. For details on remotes, contact sales on **0121 530 7000** or email sales@thomasdudley.co.uk



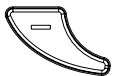
Temporary Off Function

Turns off the sensor for 1 minute to allow cleaning. To cancel temporary off, press the button again



Delay IN Time

Flow time once user operates. If required press the **IN** button until red light blinks and use the +/- keys to adjust delay time



Decrease Button

Decreases setting by an increment



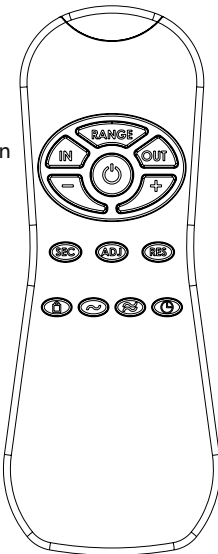
Adjust Button

Automatically adjusts sensor range. Once set the solenoid valve will open and close for 1 second to indicate ideal range has been set



24 Hour Hygiene Flush

To maximise hygiene the tap is preset to cycle every 24 hours. To toggle press the button and use the +/- keys to turn on/off



Reset Button

Restores factory default settings. If required press and hold **RES** button and press + button once



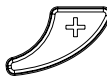
Delay OUT Time

Flow time after user moves away. If required press the **OUT** button until red light blinks and use the +/- keys to adjust delay time



Increase Button

Increases setting by an increment



Security Button

Prevents continuous running of water. By default the security time is 90 seconds. To adjust press the **SEC** button and use +/- keys to adjust



Detection Range

Only if necessary press the button and use the +/- keys to adjust detection range



3 PREPARATION

A: Tools Required. Power drill, 30mm drill bit, adjustable wrench, 4mm allen key, pozi/flat screwdrivers/bits, 12mm/ 23mm/ 25mm spanners, tape measure, pen/pencil

B: Environment. Ensure that area and surfaces worked on are clean, dust free and dry.

C: Planning. Make sure there is adequate space to install the Avanti tap and the solenoid enabling ease of access for tap if required. It is advisable to install the tap near an isolation valve for maintenance of the solenoid & Avanti tap.

D: Preparation of tap. Flush water supply lines thoroughly before installing the tap. **DO NOT** allow dirt, metal particles or PTFE tape to enter the tap.

4 INSTALLATION GUIDE

IMPORTANT: Plumbing must be installed in accordance with applicable rules and regulations.

Step 1: Fitting the Avanti tap

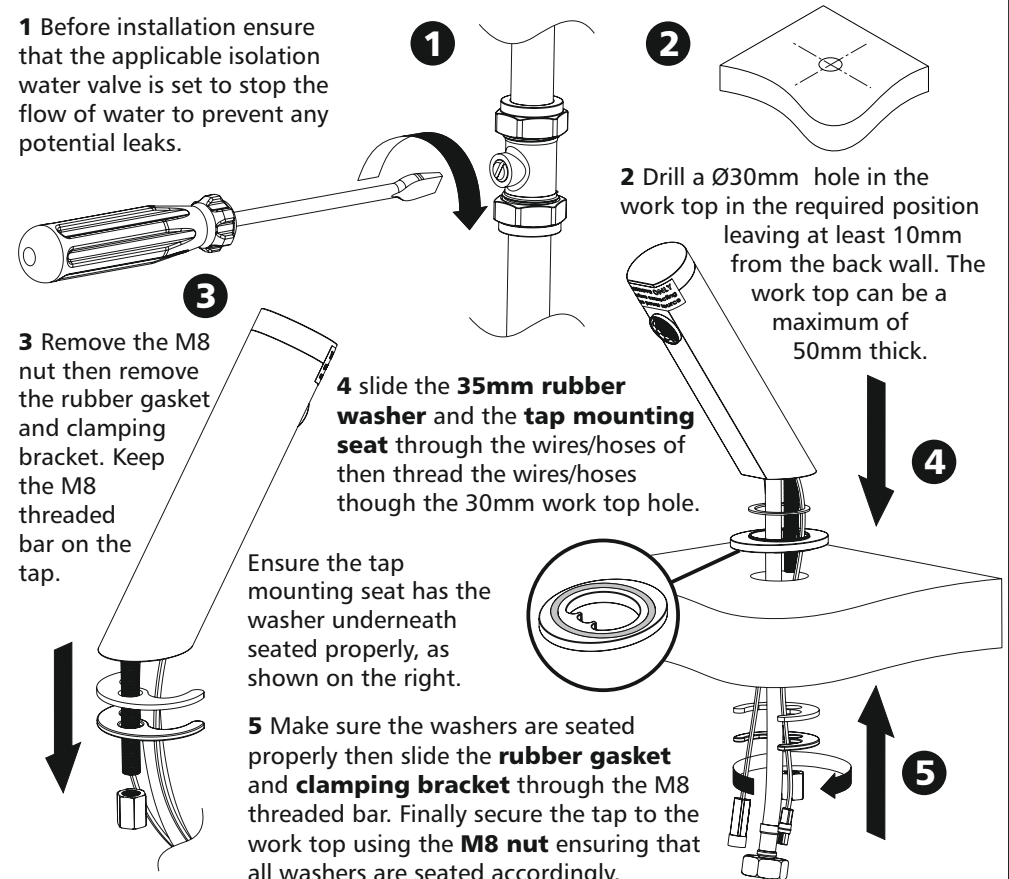
1 Before installation ensure that the applicable isolation water valve is set to stop the flow of water to prevent any potential leaks.

3 Remove the M8 nut then remove the rubber gasket and clamping bracket. Keep the M8 threaded bar on the tap.

4 slide the **35mm rubber washer** and the **tap mounting seat** through the wires/hoses of then thread the wires/hoses though the 30mm work top hole.

Ensure the tap mounting seat has the washer underneath seated properly, as shown on the right.

5 Make sure the washers are seated properly then slide the **rubber gasket** and **clamping bracket** through the M8 threaded bar. Finally secure the tap to the work top using the **M8 nut** ensuring that all washers are seated accordingly.



FOLD

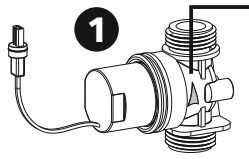
FOLD

4 INSTALLATION GUIDE Continued

IMPORTANT: Please read all of step 2 before connecting the power supply. The tap is supplied with a self adjusting sensor, the ideal sensor range will be set automatically. Ensure no objects are in front of sensor.

Step 2: Solenoid Installation & Hose/ Wire Connection

1 Prior to installing the solenoid, check to see if the filter is in the solenoid.



Ensure that the water flow follows the arrow on the solenoid.

Please note: It is advisable to locate the solenoid close to the isolation valve (not supplied).

Water filter

15mm Adaptor

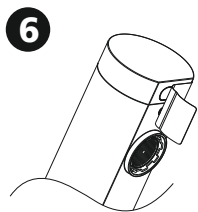
2 Screw the 15mm adaptor to the solenoid if required and fit onto the existing plumbing of water feed.

Alternatively, fit the solenoid directly without the 15mm adaptor to the existing plumbing if a direct tap connection is available

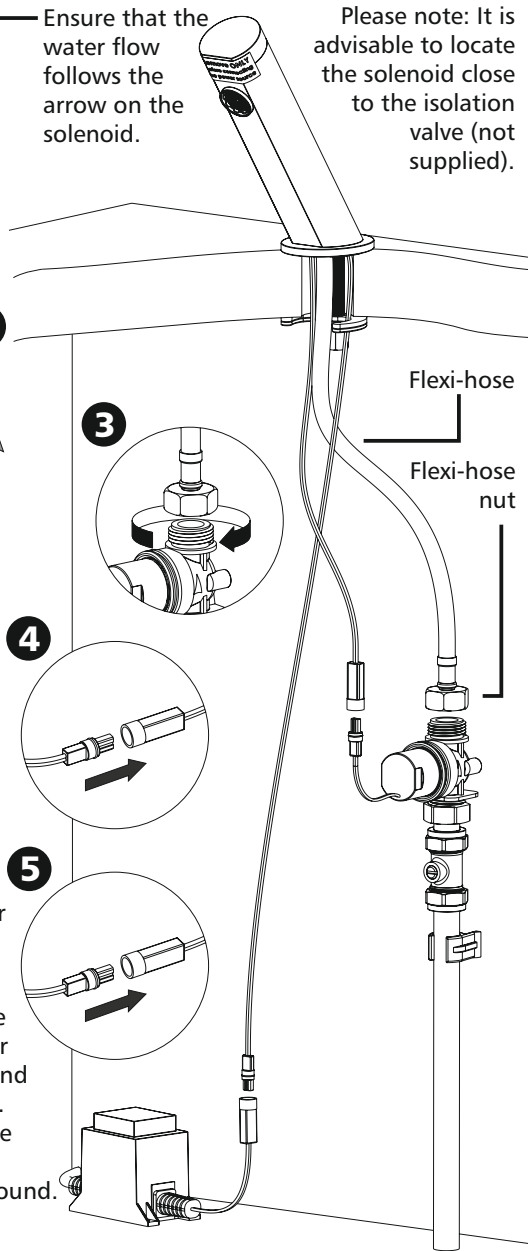
3 Once the solenoid is secured to the pipework, screw the flexi-hose nut onto the other end of the solenoid.

4 Connect the tap to the solenoid.

5 Connection the tap to the transformer box/ battery pack (see battery pack version for details).



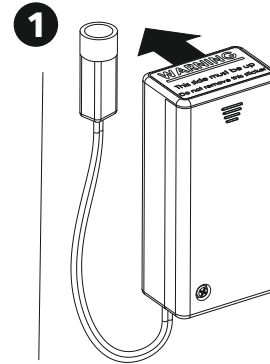
6 Remove the protective sticker immediately after connecting the power and move away from sensor. Wait **10 seconds** before using the tap to allow operating range to be found. Continue to **section 5**.



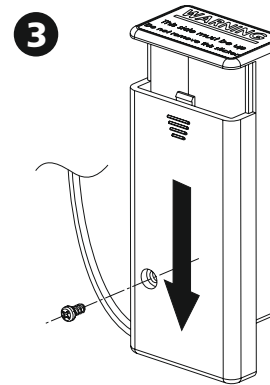
FOLD

4 INSTALLATION GUIDE Continued

Battery Pack version

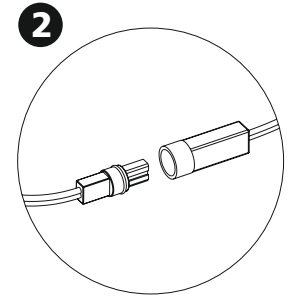


Replacing the batteries



1 Peel the back off the adhesive pad on the back of the battery pack and stick to the desired location. Ensure that the warning sticker is placed facing up.

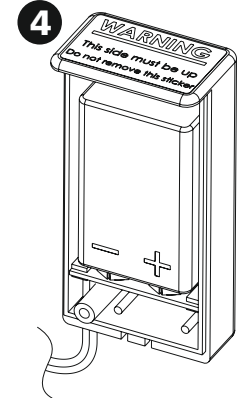
2 Plug the power connector from the tap into the battery pack cable, as shown on the right.



3 Remove the power cable from the battery pack and unscrew the security screw. Slide the battery cover out from the holder.

4 Insert a 9V battery into the battery holder as shown on the right. Reverse the steps in fig. 3 to replace the battery compartment, then re-plug the power cable.

Wait **10 seconds** before using the tap to allow the operating range to be found. Continue to **section 5**.



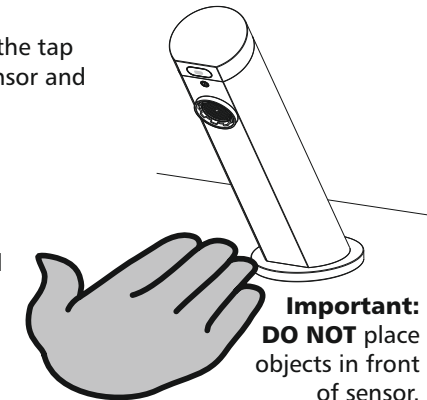
5 OPERATION

To operate the tap place your hand directly under the tap spout at a distance less than **100mm** from the sensor and spout.

Use as much water as necessary then move hands away to stop tap from dispensing.

During operation the red light on the sensor will flash to indicate the sensor has been triggered and the tap is dispensing.

Low batteries are indicated by the flashing red sensor light.



Important: **DO NOT** place objects in front of sensor.

FOLD