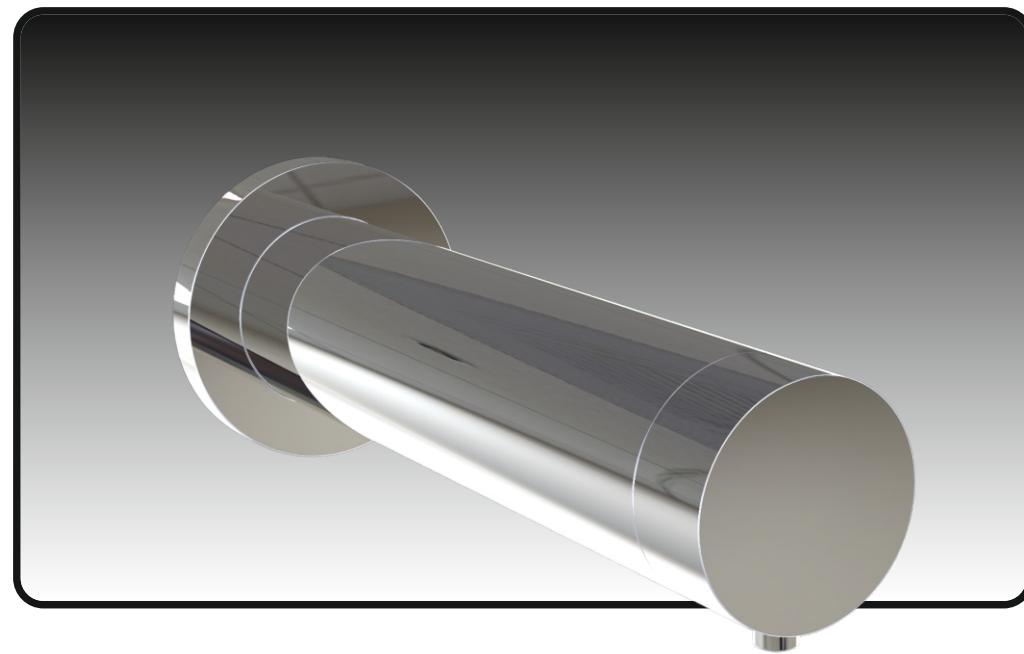


Horizon Soap Dispenser
Installation Instructions



Thomas Dudley Ltd
P.O.Box 28, Birmingham New Road,
Dudley, West Midlands, DY1 4SN
Telephone: 0121 530 7000
Fax: 0121 557 5345
E-mail: sales@thomasdudley.co.uk

1 PACK CONTENTS

IMPORTANT: Check contents, make sure all the parts are accounted for before discarding any packaging material. If any parts are missing, do not attempt to install your dispenser until you obtain the missing parts. **Please note the remote control is an optional extra.**



* Only available with battery powered Electroflo soap dispenser.

2 INSTALLATION REQUIREMENTS

IMPORTANT: Installation of the transformer must be done and checked by a qualified electrician. During installation do not expose the electronics to fluids, dust, dirt or damp.

1 DO NOT Install the sensor facing a mirror or any other electronic system operated by an infra-red sensor.

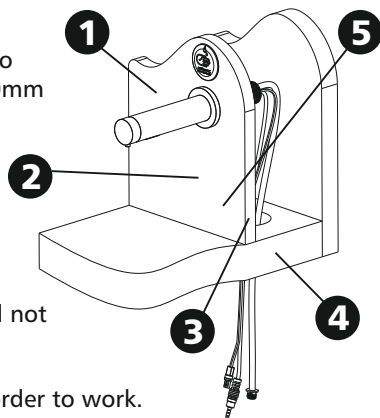
2 To prevent reflection problems, it is recommended to keep the Electroflo horizontal tap at a distance of 300mm or more between the sink and the spout.

3 The mounting wall can be up to 55mm thick.

4 Leave sufficient space for all the components behind the wall and under the work top if necessary.

5 Keep in mind the location of the users hands should not interfere with the sensor when using the sink.

6 Soap viscosity should be around 100 - 3800 cPs in order to work.



6 Soap Dispenser Remote Control (optional extra)

IMPORTANT: For detailed instructions on the remote control please refer to soap dispenser remote control packaging. Please note the remote may vary from images.

1 Soap Quantity

The 1-4 drop keys allow the user to choose the desired soap quantity. The soap quantity depends on soap viscosity.

- 1 0.2 - 0.4 cc*
- 2 0.7 - 0.9 cc*
- 3 1.2 - 1.6 cc* (Default)
- 4 2.1 - 2.3 cc*

Indication: Continued blink of the red light in sensor.

2 Adjust Button

The **ADJ** button resets to factory default which is: 3

Indication: 2 blinks of the red light in the sensor eye.

*Soap quantities are estimates only

3 Temporary off function

Press to disable soap dispensing for 1 minute. Press again to activate.

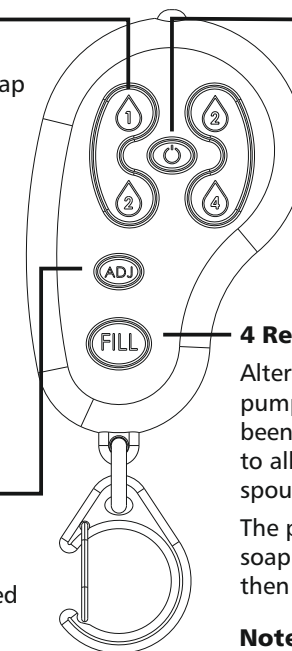
Indication: Red light blinking
Off - 2 fast blinks of light
On - 4 fast blinks of light

4 Refill the soap tank

Alternative to the refill button on pump. Press **FILL** once the soap has been refilled (for refilling see **page 4**) to allow pump to push the soap to spout.

The pump will run for 1 minute, if soap starts coming out from spout then press **FILL** again to stop.

Note: The remote can be used on all Electroflo soap dispensers.



7 TROUBLE SHOOTING

1. No Soap coming out of dispenser spout:

- a check if the red light is flashing
- b If flashing check volume of the soap in bottle, refill if low
- c If volume of soap is not low then press the refill button
- d Flashing continues then check batteries if using battery operated version.

2. No soap from dispenser and no red light flashing:

- a Check the connections between dispenser and mains/batteries. Ensure that they are completely dry and then re-attach if it is safe to do so.
- b If connected to mains check to see if mains fuse has been tripped
- c Check to see if the sensor may be picking up reflections from wash basin or any other object and eliminate cause of reflection.

3. Soap does not stop coming out of dispenser:

- a check if the black connector is fully connected between dispenser and pump.
- b If not fully connected push connectors all the way together.

If the unit fails to operate correctly after completing trouble shooting please return the unit and all packaging to your retailer.

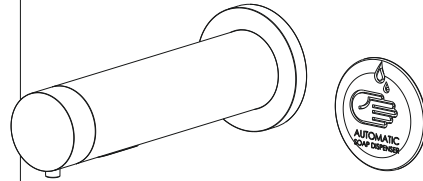
5 OPERATION

To dispense soap place hand directly under the soap dispenser spout at a distance less than **50mm** from the sensor and spout.

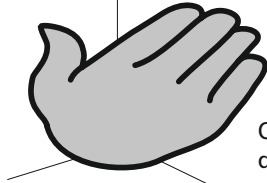
Wait until all soap has been dispensed into hand then move away to wash. Standard discharge 1.4cc (setting 3).

During operation the red light on the sensor will flash to indicate the sensor has been triggered and the soap is dispensing.

Low batteries are indicated by flashing of the red sensor light.

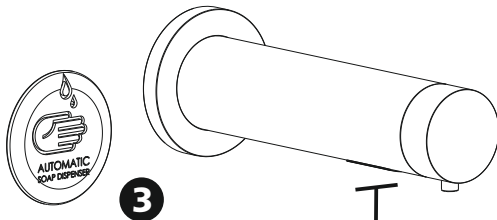


Important: DO NOT place objects on top of sensor.



Once soap has been dispensed the sensor requires 5 seconds to reset itself ready for another operation.

Cleaning the Soap Dispenser

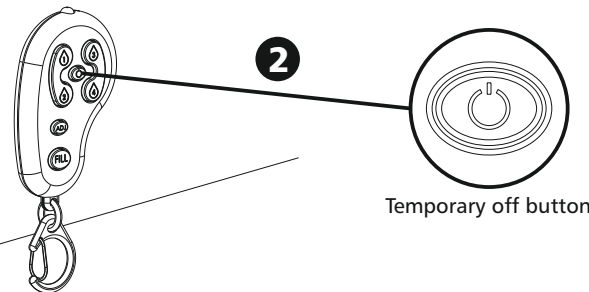


1 Hold the remote in front of the sensor about **15-20 cm** away as show below.

2 Press the temporary off button (shown below) on the remote to disable the soap dispenser for 1 minute.

3 Proceed to clean around the soap dispenser area and press the temporary off button once again to activate the soap dispenser.

Important: DO NOT use steel wool or cleaning agents containing alcohol, acid, abrasives, etc as this will cause damage to the surface. Use only soap and water then wipe dry with a clean cloth or towel.



Temporary off button

3 PREPARATION

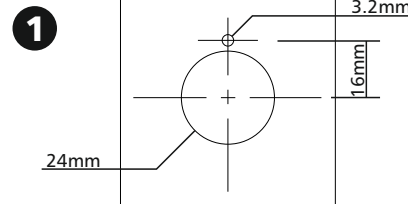
A: Tools Required. Power drill, 24mm drill bit, 3.2mm drill bit, 6mm drill bit, pozi screwdriver, tape measure, pen/pencil.

B: Environment. Ensure that area and surfaces worked on are clean, dust free and dry.

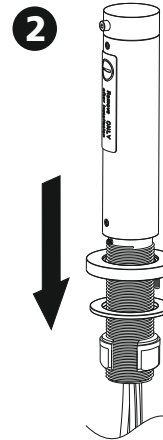
C: Planning. Make sure there is adequate space to install the soap dispenser tap and the soap dispenser bottle enabling ease of access for when the soap needs to be replaced.

4 INSTALLATION GUIDE

Step 1: Soap Dispenser Installation

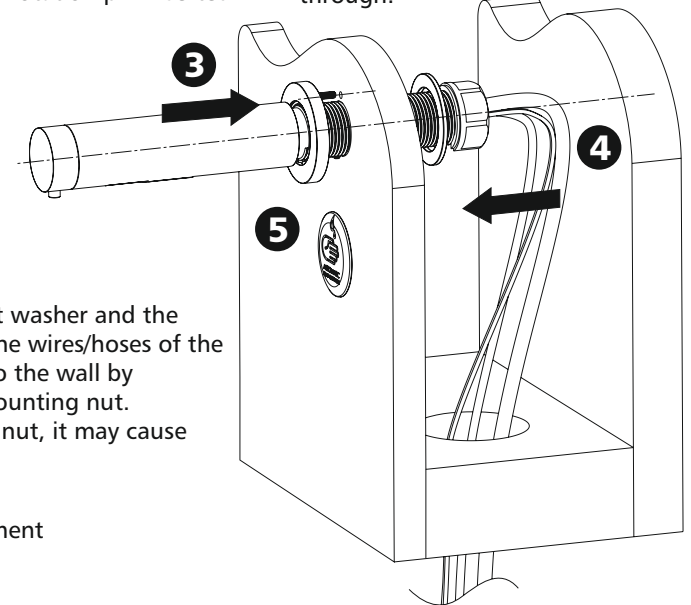


1 Drill a $\varnothing 24\text{mm}$ hole in the wall at the required location leaving at least 300mm from the spout to the surface. The wall can be up to 55mm thick. Using the diagram on the left drill a secondary hole of $\varnothing 3.2\text{mm}$ for the anti-rotation pin.



2 Remove the tap mounting nut and washer from the base of the soap dispenser tap. Ensure the mounting seat has the anti-rotation pin inserted.

3 Place the soap dispenser tap through the tap seat and into the 24mm wall hole. Make sure the anti-rotation pin locates accurately. Ensure all wires/hoses pass through.



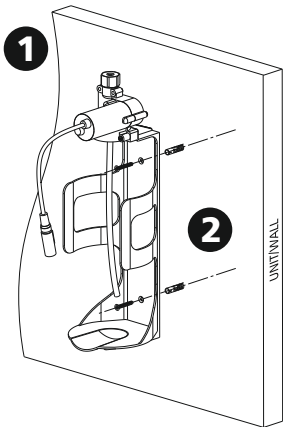
4 slide the mounting nut washer and the mounting nut through the wires/hoses of the tap and secure the tap to the wall by tightening the thread mounting nut. **DO NOT** overtighten the nut, it may cause damage to surfaces.

5 Optional badge placement

4 INSTALLATION GUIDE Continued

IMPORTANT: Please read all of step 2 before connecting the power supply. The tap is supplied with a self adjusting sensor, the ideal sensor range will be set automatically. Ensure no objects are in front of sensor.

Step 2: Soap Dispenser Holder & Bottle



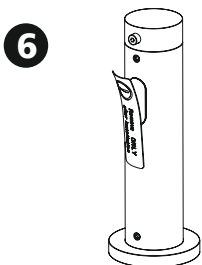
1 Remove the bottle from the holder by unscrewing then mark out the location of the dispenser pump and holder ensuring wires can easily be connected.

2 Drill two 6mm holes if drilling into a solid wall and insert the wall plugs. screw the dispenser and pump holder to the wall.

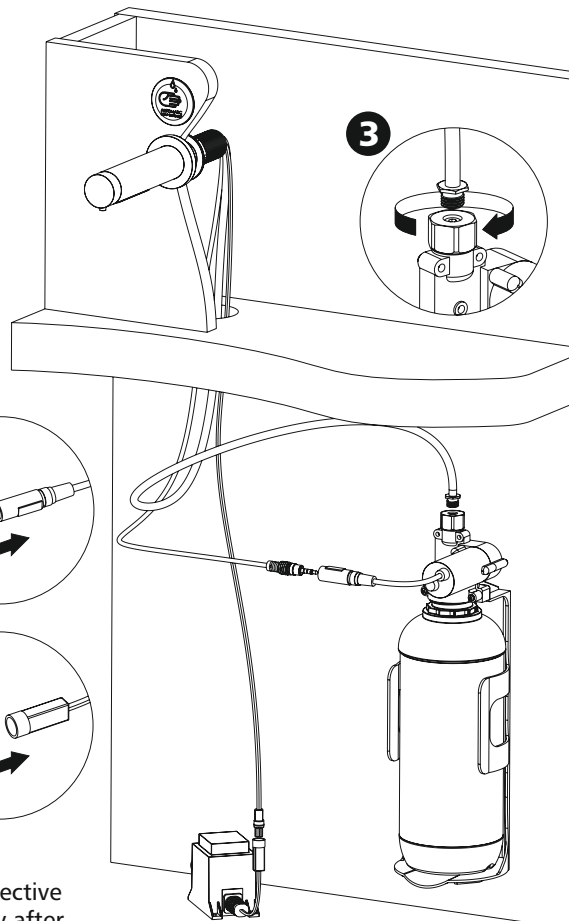
3 Once the soap dispenser tap, dispenser pump and holder are secured screw the nut at the top of the pump to the threaded tube.

4 Make the connection of the tap to the pump, ensuring the connector is completely pushed home.

5 Make the connection to the transformer box.

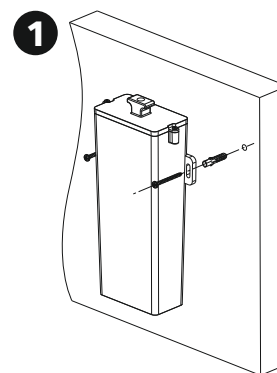


6 Remove the protective sticker immediately after connecting the power and keep away from sensor. Wait **10 seconds** before using the dispenser to allow range to be found.

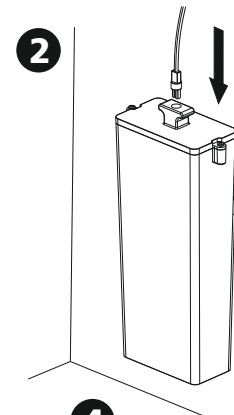


4 INSTALLATION GUIDE Continued

Battery Pack version

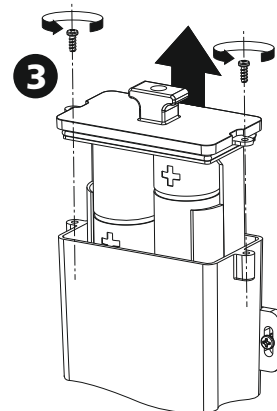


1 Drill two 6mm holes if drilling into a solid wall and insert the wall plugs. Screw the Battery Pack to the wall using the M4 x 40mm screws.



2 Plug the power connector from the soap dispenser into the battery pack at the top, as shown on the right.

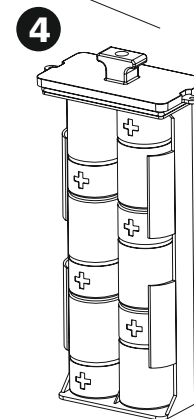
Replacing the batteries



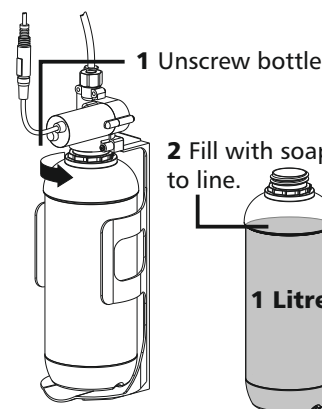
3 Remove the power cable from the battery pack and unscrew the two security screws. Lift the battery compartment out from the holder.

4 Insert 6 D-Cell batteries into the battery holder as shown on the right. Reverse the steps in fig. 3 to replace the battery compartment, then re-plug the power cable.

Wait **10 seconds** before using the dispenser to allow range to be found.

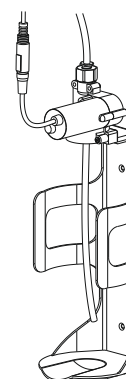


Step 3: Filling the Soap Container

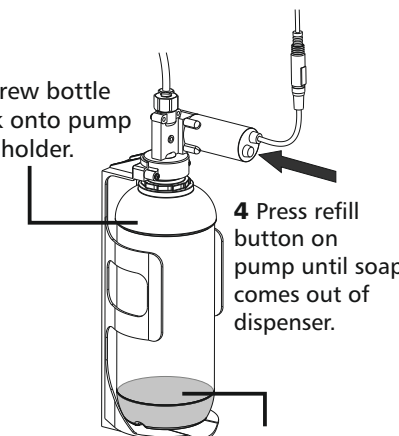


2 Fill with soap to line.

1 Litre



3 Screw bottle back onto pump and holder.



4 Press refill button on pump until soap comes out of dispenser.

5 Refill soap when level reaches line or sensor light begins to flash.