

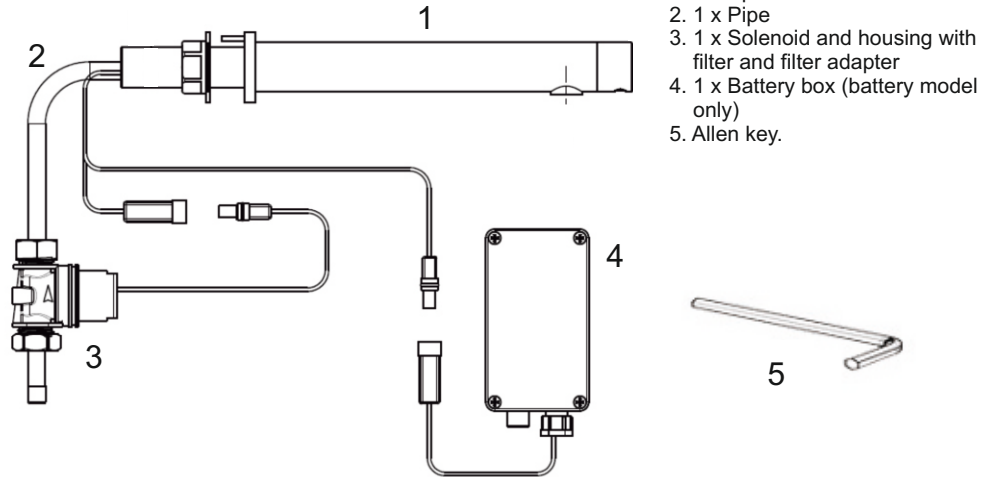
# DUDLEY electroflo® taps

## Models:



Electroflo Horizon  
Electroflo Horizon B

## Pack Contents



**Power supply:** 6 x 1.5V AA batteries or 9V transformer  
**Recommended water pressure:** 0.5-8.0 bar (7-116 PSI)  
With water pressure of more than 8 bar, use a pressure reducing valve.

**Preset sensor range:** Self Adjusting  
**Minimum sensor range:** 80mm  
**Maximum sensor range:** 300mm  
**Security Time:** 90 seconds which can be reduced with the remote control

**TD** **Thomas Dudley Ltd**  
PLASTIC CISTERN MANUFACTURERS

Dauntless Works, P.O.Box 28, Birmingham New Road,  
Dudley, West Midlands, DY1 4SN

Telephone: 0121 530 7000

Fax: 0121 557 5345

E-mail: sales@thomasdudley.co.uk

## Pre-installation Information

### Check contents

Separate all parts from the packaging and check each part with the “pack contents” section.

Pay attention to the different model variations.

Make sure all parts are accounted for before discarding any packaging material.

If any parts are missing, do not attempt to install your electronic tap until you obtain the missing parts.

### Warnings

**Do not** install the sensor facing a mirror or any other electronic system operated by an infra-red sensor.

To prevent reflection problems, it is recommended to keep a minimum distance of 300mm between the sensor and the bottom of the wash basin.

### Preparation for installation

Flush water supply lines thoroughly before installing the tap. **Do not allow dirt, PTFE tape or metal particles to enter the tap.**

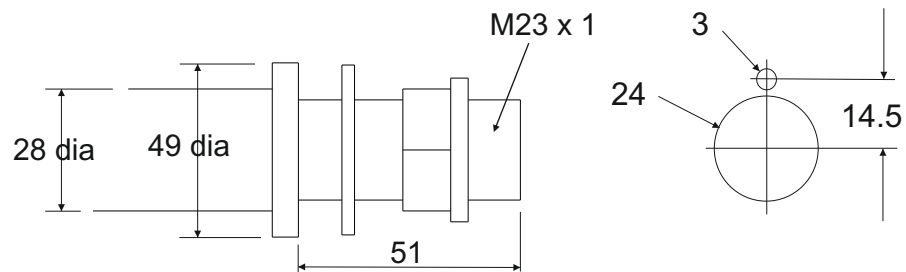
**Important - Plumbing must be installed in accordance with applicable codes and regulations.**

**Installation of the mains adaptor must be carried out and checked by a qualified electrician. During installation do not expose the electronics to fluids, dust, dirt or damp.**

## Tap Installation

### Step 1 – Installing the tap

1. Drill a  $\varnothing 24$ mm hole and a  $\varnothing 3$ mm anti-rotation hole in the position where you want to install the spout of the tap. See FIG.1.



2. Insert the spout thread through the wall and fix behind the wall with the hexagonal nut and the washer.

## Trouble Shooting

**No water is coming out of the tap:** Check the batteries and replace if necessary.

Ensure sensor is not picking up reflections from a mirror or any other object.

Check the sensor range - If range is too short or too long, increase or decrease the range.

Check all connections and ensure power supply is correctly connected.

Check the solenoid valve. If debris or scale are present, unscrew the solenoid valve, pull out the plunger and the spring and clean them. Use scale remover if necessary. When replacing the spring, make sure that it is in the vertical position.

Check the diaphragm. If necessary, clean the orifice or replace it.

Check the water supply pressure. It must be 0.5 - 8 bar (7 - 116 PSI). For water pressures above 8 bar, use a pressure reducing valve.

**Water flow does not stop:**

Check the diaphragm. If necessary, clean the orifice or replace it.

Check the solenoid valve. If debris or scale are present, unscrew the solenoid valve, pull out the plunger and the spring and clean them. Use scale remover if necessary. When replacing the spring, make sure that it is in the vertical position.

Ensure sensor is not picking up reflections from a mirror or any other object.

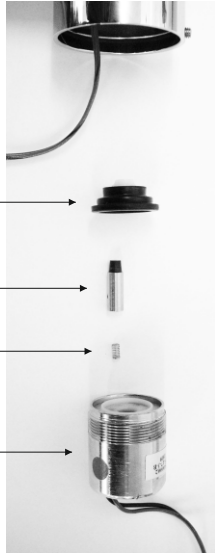
Ensure sensor is not dirty or covered.

Check the batteries and replace if necessary.

Check all connections and ensure power supply is correctly connected.

**Water flow diminished:**

Check the filter and aerator and if necessary remove, clean and reinstall (to remove aerator unscrew from tap spout with spanner).



## Tap Installation - Continued

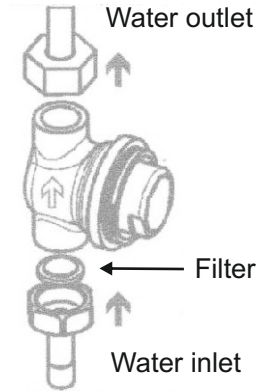
### Step 2 - Connecting the water supply

1. Shut off the water supply

**2. Make sure the filter is located in the correct orientation between the solenoid housing and the water inlet.**

3. Fit the pipe from the spout base to the solenoid valve housing.

4. Fit the water supply inlet to the filter adapter at the solenoid housing.



### Step 3 - Connecting the power source

1. Connect the **black** cable coming from the sensor to the solenoid valve connector.

2. Connect the **red** cable coming from the sensor to the power source connector (battery box or transformer).  
For battery model: install the battery box underneath the sink using the double sided adhesive foam tape or screws.

3. Turn on the mains water supply. Check for leaks.

4. If the pre-set sensor range is not satisfactory to your purposes, please refer to the section entitled "Range adjustment".

### Adjusting the Aerator

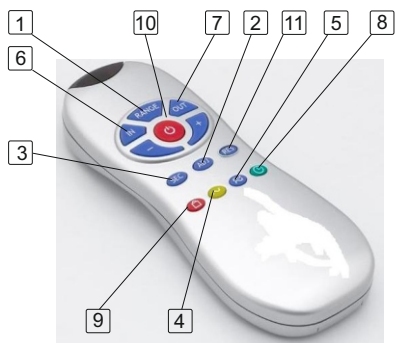
This tap includes a special aerator that allows you to adjust the water stream direction on site in order to prevent water splashing if needed. To change the angle of the water stream, simply move the adjustable tilting plate by pressing it.



## Adjustment of settings

**HORIZON:** This product is supplied with a self adjusting sensor. The ideal sensor range for the specific location will be set automatically. Check there are no objects in front of the sensor.

**Adjustment using Remote Control** - optional and recommended



If necessary, use the remote control to adjust the settings of the tap as follows:

Hold the remote control straight in front of the sensor about 10cm (4"). Press the required button once. The red light in the front of the sensor will flash quickly. Adjustments can then be made by pressing the (+) or (-) buttons. Every press will increase or decrease one level.

- 1 DETECTION RANGE - One press of either +/- gives an increase / decrease of 10mm in range up to a maximum of 300mm and a minimum of 80mm.
- 2 MANUAL RANGE ADJUSTMENT - N/a.
- 3 SECURITY TIME: This is to combat vandalism. If the sensor is covered for more than 90 seconds it will shut off. 20 presses will reduce the time to a minimum of 30 seconds
- 4 FLOW TIME: N/a.
- 5 FLOW TIME 2: N/a.
- 6 DELAY IN TIME: N/a.
- 7 DELAY OUT TIME: Determines the delay time after the user has removed their hands from under the tap. 1 press increases / decreases the time by 3 seconds.
- 8 24 HOUR HYGIENE FLUSH: Provides a timed flush of 24 hours to keep the tap clear from water borne diseases and to stop freezing.
- 9 LOCK OUT: N/a
- 10 TEMPORARY OFF FUNCTION: Turns off the flush for one minute to allow for cleaning etc. To cancel the command, press the button again or wait 1-2 minutes
- 11 RESET BUTTON: Allows the user to return to factory preset options. Press the reset and + simultaneously.

## Battery Replacement Instructions

When the battery weakens, the red indicator light will blink at a constant rate when the users hands are within the sensor range. The battery should be replaced within 2 weeks. Always use batteries from a reputable source. Poor quality batteries may affect the performance of the product.

### To replace the battery:

1. Carefully open the battery box by removing the 4 screws.
2. Remove the old batteries.
3. Replace with six new 1.5V AA batteries (Alkaline LR6 recommended).
4. Close the box and replace the 4 screws.

## Maintenance

### Filter Cleaning Instructions

This tap is provided with a stainless steel filter to prevent foreign particles from entering the lines. If the water flow has decreased, this can be because the filter is clogged. The filter can be cleaned as follows:

1. Turn off the water shut-off valve.
2. Disconnect the water supply pipe from the adaptor.
3. Remove the filter and wash under running water.
4. Reassemble the parts.
5. Turn on the incoming water supply.
6. Make sure that there is no water leakage.

### Care and Cleaning of Chrome and Special Finishes.

**DO NOT** use steel wool or cleansing agents containing alcohol, acid, abrasives, or the like. Use of any prohibited cleaning or maintenance products or substances could damage the surface of the tap. For surface cleaning of the tap use **ONLY** soap and water, then wipe dry with a clean cloth or towel. When cleaning bathroom tiles, the taps should be protected from any splattering of harsh cleansers.

If required chlorine can be used at a concentration of 50mg/l maximum in water per one hour dwell time.